



**THE JANNALI  
HIGH SCHOOL**  
CONNECT | THRIVE | ACHIEVE

# SCHOOL INFORMATION BOOKLET 2024



Left to right: Ashley Goddard (VC), Ashlee Amer (VC), Kiera Dzeperoski C), Hayden Phillis (C)

The Jannali High School ☎: 9521 2805  
Sutherland Road  
Jannali NSW 2226

💻: [jannali-h.schools.nsw.gov.au](http://jannali-h.schools.nsw.gov.au)  
✉: [jannali-h.school@det.nsw.edu.au](mailto:jannali-h.school@det.nsw.edu.au)

CONNECT | THRIVE | ACHIEVE



# VISION STATEMENT

The Jannali High School is a community where all staff and students are challenged to innovate, succeed and achieve their personal best.

At TJHS we develop future focussed learners, who are deep critical thinkers, problem solvers, highly inquisitive and independent, equipped to engage actively and ethically in society.

We nurture high expectations, within a supportive and inclusive environment, where all members of our community are encouraged to:

**C**ooperate

**A**chieve

**R**espect

and

**E**ngage





**THE JANNALI  
HIGH SCHOOL**  
CONNECT | THRIVE | ACHIEVE



The Jannali High School offers a broad and challenging comprehensive co-education, promoting excellence and achievement. Our experienced and dedicated staff provide a high quality education experience for students of all abilities and interests.

The Jannali High School students have a tradition of strong academic achievements. The vast majority of students achieve HSC success and continue to university, further tertiary training or employment. Our school has a strong tradition for school representations in sport, debating, volunteering, public speaking, band, drama ensembles, dance ensembles and a cappella ensemble.

Our graduates are confident, caring, focused, mature young men and women with positive attitudes. They have a well-developed sense of community, citizenship and social responsibility. We maintain strong links with our partner primary schools, local SES, Aboriginal community and business community. The Jannali High School has strong links with its community, parents, local primary schools, TAFE and university campuses. We are a proud member of the Heart of the Shire Community of Schools, a group of schools working together to provide the best possible education for students in all of our schools.

Community participation is welcomed at The Jannali High School. The Parents and Citizens Association is an important body in our school organisation. To ensure you are up to date with school activities and events, our school website ([www.jannalihs.nsw.edu.au](http://www.jannalihs.nsw.edu.au)) is regularly updated with the latest information and is an effective communication tool that provides not only dates and times but information about our dynamic and busy school.

The school enjoys a positive reputation for our high expectations on learning. Students learn in a safe, supportive environment, further developing self-discipline, motivation, teamwork, self-confidence and responsibility. Our school has effective recognition, wellbeing, discipline, uniform and attendance practices and procedures that reinforce our high expectations of each student and require.

The school's student wellbeing and behaviour management systems are based on our values and expectations of C.A.R.E. (Co-operate, Achieve, Respect, Engage) which emphasises our values and expectations for all students.

Our school values:

- ✓ *Quality*            Undertaking everything to the best of your ability and always trying to improve
- ✓ *Respect*            Having regard for yourself, others, property and the environment, while accepting the right of others to hold different or opposing views
- ✓ *Integrity*           Being consistently honest and trustworthy
- ✓ *Cooperation*       Working together to achieve common goals, providing support to others and engaging in peaceful resolution of conflict
- ✓ *Care*                Showing concern for the wellbeing of yourself and others, while being understanding and acting with kindness

We welcome you to our school and trust that our partnership will be long and successful, knowing that you are going to add positively to the culture and ethos of The Jannali High School in the coming years.

Rick Coleman  
Principal



# ACADEMIC CURRICULUM

## Years 7 and 8

Stage 4 students follow a broad curriculum that includes study of:

- ✓ English
- ✓ Mathematics
- ✓ Science
- ✓ History
- ✓ Geography
- ✓ Personal Development/Health/PE
- ✓ Languages - Japanese
- ✓ Industrial Arts
- ✓ Home Economics
- ✓ Visual Arts
- ✓ Music
- ✓ 21<sup>st</sup> Century Learning
- ✓ Computing Skills / Digital Citizenship
- ✓ Dance and Drama (for our scholarship students)
- ✓ Extension experiences across all key learning areas

Year 7 students have the opportunity, through an application process, to be considered for a place in our Extension class. The Extension Class continues into Year 8.

## Years 9 and 10

Students in Stage 5 study the core curriculum:

- English
- Mathematics
- Science
- Australian History, Geography
- Civics and Citizenship
- PD/Health/PE

Students can also choose to study two elective subjects in Year 9 and three elective subjects in Year 10. These include:

- Child Studies
- Commerce
- Dance
- Design & Technology
- Drama
- Food Technology
- Graphics Technology
- Industrial Technology, Electronics
- Industrial Technology, Multimedia
- Industrial Technology, Timber
- Information and Software Technology
- International Studies
- Languages - Japanese
- Music
- Physical Activity and Sports Studies
- Textiles and Design
- Visual Arts
- Visual Design
- Work Education
- World History
- Extension experiences across all key learning areas

## Years 11 and 12

Stage 6 students (the Preliminary and Higher School Certificate) must study:

- ✓ 2 units of English (Advanced, Standard, Extension 1 and 2 and English Studies) and may choose from a broad range of subjects including:

- Ancient History
- Biology
- Business Studies
- Chemistry
- Community & Family Studies
- Construction
- Dance
- Design & Technology
- Drama
- Earth & Environmental Science
- Engineering Studies
- Food Technology
- Geography
- Graphics Technology
- History Extension
- Hospitality
- Industrial Technology, Multimedia
- Industrial Technology, Timber
- Information Processes and Technology
- Investigating Science
- Language - Japanese
- Legal Studies
- Mathematics (Advanced, Standard, Extension I and Extension II)
- Mathematics Numeracy
- Modern History
- Music
- PD / Health / PE
- Photography, Video & Digital Imaging
- Physics
- Society & Culture
- Software Design & Development
- Sport, Lifestyle and Recreation
- Textiles & Design
- Work Studies
- Visual Arts

Students may also choose to study from a wide range of subjects delivered by TAFE. Students may also vary their curriculum pattern by engaging in courses through Distance Education or Open High School (specific languages)



# LEADERSHIP & EXTRA CURRICULAR OPPORTUNITIES

## AUSTRALIAN COMPETITIONS

We are involved in Mathematics, Science, English, Computer Skills, History and Geography state-wide competitions.

## CREATIVE & PERFORMING ARTS (School Band Visual Arts, Music, Drama)

Our highly regarded programs are outlined in the “Creative & Performing Arts Program” pages of this booklet.

## DANCE

At TJHS we offer a range of Dance Ensembles for all students. All ensembles will be provided with performance opportunities including local and regional Dance Festivals, Education Week and our Performing Arts On Show evenings.

## DUKE OF EDINBURGH AWARD SCHEME

The Award is a leading structured (non-formal education) youth development program, empowering all young Australians aged 14-24 to explore their full potential regardless of their location or circumstance. The Award is a fully inclusive program and has no social, political, or religious affiliations.

## INDUCTION PROGRAMS

Successful student transition at key points throughout high school supports students’ overall success. We have a strong Primary Transition Program with our HOTSCOS schools and run student induction programs at the beginning of academic programs from Years 7 – 12.

## JANNALI CARES

We have both a student and staff team known as the Jannali CARES team. Together they implement our Environmental Management Plan consisting of the focus areas: Curriculum, Resource Management and Grounds Management.

The Jannali CARES team often works in conjunction with the SRC to promote environmental awareness and responsibility.

## JEM MENTORING PROGRAM

Our student JEM mentoring program offers additional support through proactive one-on-one assistance.

## PEER SUPPORT

This is a support program for Year 7 students, who are assisted by trained Year 11 students to adjust to high school life smoothly and comfortably.

## PREMIER’S SPORTING CHALLENGE

Learning to Lead: In partnership with our Partner Primary Schools, students in Years 9 & 10 are given the opportunity to work with Year 5 and 6 students to develop their sport leadership skills.

## PREMIER’S READING CHALLENGE

This opportunity is available for all Year 7 students. Information about this program can be gained from the Librarian. It is open to students in Years 7-12.

## PUBLIC SPEAKING & DEBATING

TJHS enters junior and senior teams every year in the Shire Debating Competition and the Premier’s state-wide debating challenge. Our indigenous students also participate in the ‘Speak Up’ and ‘Great Debates’ state-wide competition.

## RAISE MENTORING PROGRAM

This program is offered to Year 8 students through the Raise Foundation. It involves independent mentors for 20 weeks.

## RISE SENIOR MENTORING PROGRAM

Year 12 students access teacher as a mentor for support throughout the HSC year.

## SRC

Each year School Captains, Vice Captains and Year representatives are elected and assume leadership roles in the school. Prefects, senior leaders and Junior SRC representatives play a vital role in our school to provide a voice for the student body.

## SPORT

We play grade sport in the Port Hacking Zone as well as a wide variety of recreational sports (see the "Sport" section for more detail).

## TECH CREW

Students with skills and interest in backstage, audio and lighting manage a range of school-based productions and events, developing industry skills in audio, lighting and backstage. They develop leadership, communication and collaboration skills working with their peers and members of staff.

## VOLUNTEERING PROGRAM

This program operates every Thursday, building students' civic responsibility.

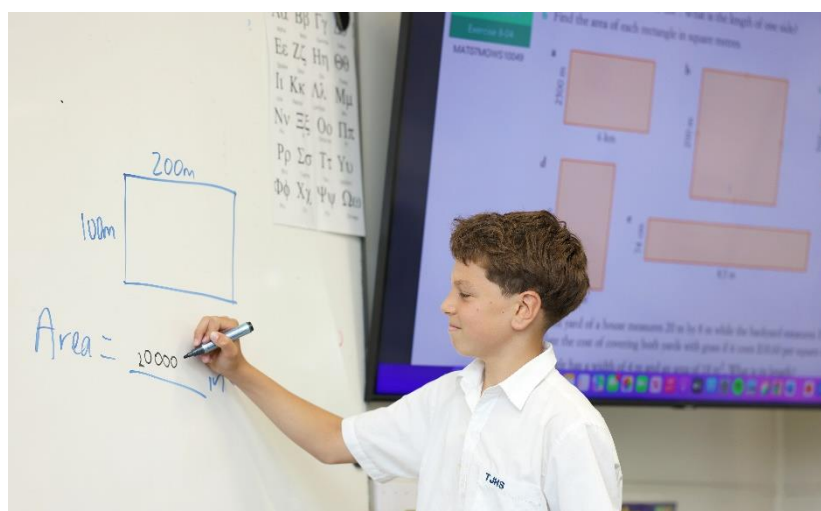
## WELLBEING WORKSHOPS

Seminars and workshops aimed at helping students cope with life in the 21<sup>st</sup> century. These age-appropriate activities support all Year groups and are integral to our annual Wellbeing Calendar.

## YEAR 7/8 HIGH POTENTIAL & GIFTED

Our Extension Class for Year 7 and Year 8 has been established to better extend the learning of our high potential and gifted students. A challenge-based learning program is an integral part of the learning experience for these students. Extension activities are provided to these students in all KLAS.

<https://jannali-h.schools.nsw.gov.au/learning-at-our-school/gifted-and-talented-class.html>



# TEACHING AND LEARNING AT TJHS

## ACADEMIC RIGOUR:

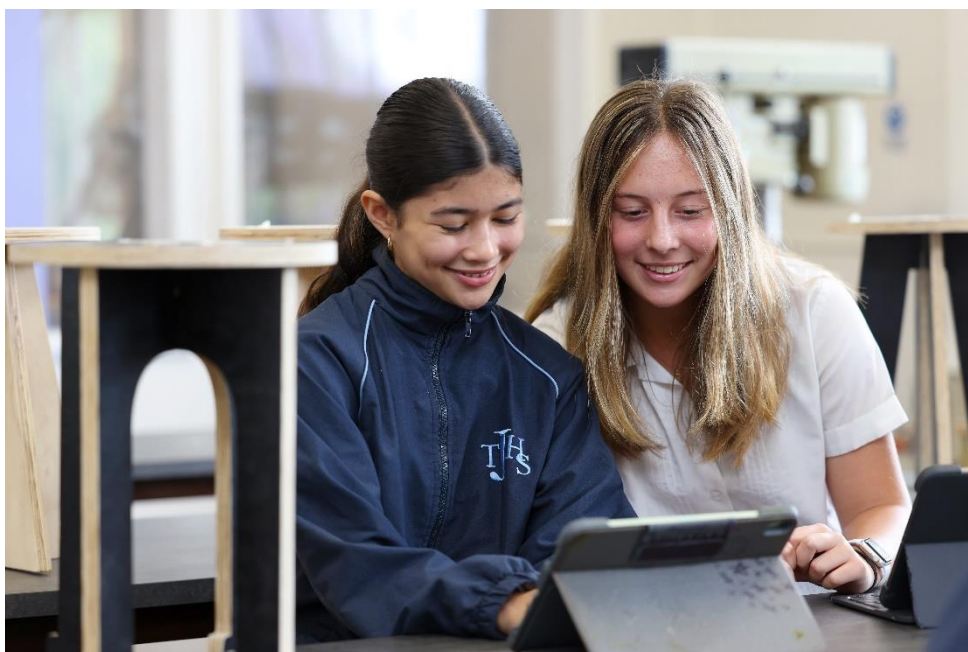
The Jannali High School has a proud tradition of **high achievement and academic success** through implementing effective programs that support every individual.

We ensure all students are encouraged and challenged to achieve their very best. To ensure our students achieve their personal best, our RISE Mentor Program supports our Year 12 students to achieve their academic goals and maintain their wellbeing throughout their HSC year. The RISE Mentor Program is complemented by our Years 10 – 12 Senior Review process. In addition to this HSC data is rigorously investigated, annually, to ensure that our staff are evaluating how to continue to refine our students' level of knowledge, understanding and skills.

The Year 10 Set Up For Success Program has been designed to equip students with the skills and mindset for a successful transition into the senior school.

**BYOiPAD for Years 7, 8, 9 and 10:** This program aims to:

- ✓ provide access for each individual student to their own device, enabling instant research, opportunities for creation and collaboration in classroom settings.
- ✓ provide opportunities for the staff to facilitate learning in an innovative and collaborative manner in classroom learning environments
- ✓ utilise students' previous experiences from primary school, and continue to foster 1:1 access to technology to enhance learning.
- ✓ To ensure the success of this program, key staff are being provided with individual professional learning which aims to be shared across the entire school setting.



## ASSESSMENT & REPORTING:

We have instituted, in all learning areas, a process to ensure all learning experiences and assessment tasks are of the highest intellectual quality and are designed to allow all students the opportunity to operate at a high level of academic achievement. Assessment schedules and booklets are issued for each cohort so that all assessment needs per semester are clear and accessible to each student / family.



## INTERIM REPORTS:

Systematic review of student performance and progress in their classes has been established. As a result, staff provide generalised reports on students' learning progress and application in Term 1 for Years 7-12. These reports are emailed home to families and care givers to provide information and begin discussions about progress and achievement.

## ACADEMIC REPORTS:

Academic reports are provided for all students as Half Yearly and Yearly reports.

The Semester 1 reports are provided in printed form at the end of Term 2 and the beginning of Term 3. These reports form the basis for discussions at the mid-year Parent / Teacher interviews.

The Semester 2 reports are provided in printed form at the end of Term 3 (Year 12 only) and for all other year groups toward the end of Term 4.



# SUPERVISION OF STUDENTS

- Students are supervised in the quadrangle from 8.20am each day.
- School commences each day at 8:40am and finishes at 3:00pm (2:45pm on Thursday Sports Day).
- Some senior students will also have early start times on some days, depending on their curriculum pattern.
- If there is an incident in the playground students should report to the teacher or Head Teacher on playground duty.
- There are six designated playground areas of the school supervised by staff on a rostered basis at recess and lunch as well as supervision in the library, the gymnasium and the oval.
- The Principal and Deputy Principals supervise students catching buses at the end of the school day (excluding Thursdays sport) when HTs are rostered on to busy duty.
- On sports afternoon students are dismissed at 2:45pm. This is necessary so that those students who travel home by bus can be taken back to school in time to catch their buses by 3.00pm.
- Students from Years 7 – 10 (Year 11 Term 1 grade sport only) participate in sport every Thursday. As a result they wear their PE uniform all day on Thursdays.



**ATTENDANCE MATTERS** – When your child attends every day learning becomes easier and your child will build and maintain friendships with other students.

- Attendance at school is compulsory. Students must attend all timetabled lessons, sport and sporting carnivals. Student absences are required to be explained in writing within 7 days of the absence to the Administration Office or the student's roll call teacher.
- Parents are requested to phone the school if their son/daughter will be absent for more than 3 days.
- On the day of your child's return to school, there should be a note written and signed by a parent explaining the reason for the absence and the days and dates of the absence. The student should submit the note to his/her Roll Teacher during roll call.
- A late-comer must provide a note from home explaining the reason for his or her lateness.
- We also have an SMS and email messaging system to inform parents of their child's absence and enable parents to provide a reason.
- Planning necessary appointments for outside school times (including Thursday afternoon sport) will reduce disruption to learning.
- Early leave requests must be in writing by a parent/carer and provided to the Administration Office before 8:40am Monday to Friday.

# TJHS EXPECTATIONS - @ TJHS we C.A.R.E.

At TJHS in 2020, expectations about behaviour have been made more explicit and memorable. At TJHS we:

- ✓ COOPERATE
- ✓ ACHIEVE
- ✓ RESPECT, and
- ✓ ENGAGE – we C.A.R.E

<i>Values</i>	<i>Expectations</i>
We <b>COOPERATE</b> by	<ul style="list-style-type: none"><li>• Being polite</li><li>• Acting safely at all times</li><li>• Being in the right place on time</li><li>• Wearing the school uniform correctly</li></ul>
We <b>ACHIEVE</b> by	<ul style="list-style-type: none"><li>• Following instructions</li><li>• Doing our personal best</li><li>• Being prepared for every lesson</li><li>• Being active learners at school and at home</li><li>• Attending school every day</li></ul>
We <b>RESPECT</b> by	<ul style="list-style-type: none"><li>• Allowing others to learn</li><li>• Using acceptable language at all times</li><li>• Showing courtesy to everyone in the school community</li><li>• Positively representing the school</li><li>• Looking after the school environment</li><li>• Keeping your hands to yourself – we believe that every student should feel safe and respected.</li><li>• Being a good citizen</li></ul>
We <b>ENGAGE</b> by	<ul style="list-style-type: none"><li>• Actively Listening</li><li>• Participating wherever possible</li><li>• Asking for help when needed</li><li>• Being responsible for our own actions</li><li>• Contributing positively in classrooms and in the school community</li></ul>

Statements about expected behaviours in both the classrooms and playground are being promoted, discussed and taught explicitly during Year Meetings and Roll Call. For further information, see the school website.



# FACILITIES

The Jannali High School has excellent facilities to cater for our broad curriculum. These include:

- Wi-Fi network across the school, with the installation of software that enables the sharing and projection iPads in classrooms.
- Dedicated computer laboratories as well as free standing desktop computers and laptops which are available for student use in the library.
- A well-resourced school library, with a dedicated senior study area and junior working spaces
- Purpose-built, state-of-the-art, dance and drama studios
- Apple TVs in every classroom
- Three Hospitality kitchens, including a commercial kitchen
- A Textiles room
- A gymnasium
- A multi-purpose outdoor sporting area



- Facilities for Creative & Performing Arts including a kiln (for pottery and ceramics), Photography darkroom, Music rooms, Visual Arts Workshops and an auditorium
- Five Science laboratories
- Large Industrial Arts workspaces including woodwork and metal workshops and rooms for Technical Drawing and Computer-Assisted Design
- Pleasant grounds including a shady “passive area”, a Covered Outdoor Learning Area and access to an adjoining oval.



# PARENT & CAREGIVER INVOLVEMENT

The Jannali High School constantly strives and seeks full parental support and cooperation to develop your child's learning experiences and enhance our sense of community. Schools function most effectively when staff, students and parents have mutual respect and the confidence to work in a collaborative manner.

Examples of parent/caregiver involvement include:

- personal discussions with the Principal and staff
- attending the regular meetings of the Parents and Citizens Association
- attending events and information evenings

We welcome enquiries about your child's progress. It is helpful if you telephone for an appointment before coming to the school so that relevant information can be gathered and so that staff you wish to see can be available.



## PARENTS AND CITIZENS ASSOCIATION

Parents are invited to join the Parents and Citizens Association which meets throughout the year each term. Our P&C operates in a different manner to most. We have a 'closed Facebook group' established to enable discussions about P & C issues offsite. The P & C Association supports the school in a variety of ways including through the provision of physical resources.

If you are interested in contributing to discussions, then download the eP&C application form from the school website <http://www.jannalihs.nsw.edu.au> and submit the completed form to the front office.

## PARENT—TEACHER INTERVIEWS

### Parent/Teacher Nights

Parent/Teacher nights are held each year for parents of all students. At these meetings parents can discuss their child's progress with their teachers. Details of dates and arrangements are sent home with the students giving sufficient warning for parents to make arrangements to attend. An online booking system is used to facilitate this process. It is possible for parents to book appointments so that they will meet a teacher at a time mutually suitable.

### Individual Interviews

If it is necessary, the Principal or a Deputy Principal may request parents to visit the school to discuss particular aspects of a student's learning and wellbeing. Similarly, parents are free to ring the school to arrange with the Principal or Deputy Principal to discuss their child's learning and wellbeing.



# PERFORMING ARTS PROGRAM

*The Jannali High School has strong and varied programs dedicated to providing opportunities for students to excel in the performing arts. Students are extended through Music, Dance and Drama performances and workshops, as well as Visual Arts exhibitions, competitions and enrichment experiences.*

The CAPA faculty are dedicated to providing opportunities for students to excel through participation in our strong curricula and co-curricular programs. These include:

## CONCERT BAND

TJHS's Concert Band program is committed to musical excellence. Under the musical direction of Mr Eric Dunan, students receive specialist instrument tuition and full band rehearsals twice a week before school and participate in a number of performances throughout the year. The band provides an opportunity for students to develop their instrument techniques and ensemble skills through playing exciting repertoire.



## THE TJHS VOCAL ENSEMBLE

The vocal ensemble showcases excellence in singing, both accompanied and A capella. Students are selected through audition and rehearse weekly. They perform widely at school functions and in the local community. Students develop vocal techniques as well as self-confidence and the ability to participate as a team member.

<https://jannali-h.schools.nsw.gov.au/learning-at-our-school/key-learning-areas/creative-arts.html>

## YEAR 7 DANCE AND DRAMA SCHOLARSHIPS

While in Year 6 students can apply for our Year 7 Dance or Drama Scholarship. If successful these students undertake an extension program that caters for their high potential within a formalised curriculum. Information and application processes can be found on our school's website @ <https://edit.sws.schools.nsw.gov.au/editor.html/content/doe/sws/schools/j/jannali-h/www.html>

## **DANCE AND DRAMA ENSEMBLES**

Dance and Drama ensembles are open to all students at TJHS, where weekly rehearsals are run to perform at events such as Sutherland Dance Festival, In the Spotlight Dance Festival, In the Spotlight Drama Festival, Schools Spectacular and school performances.

## **PERFORMANCE AND EXHIBITION OPPORTUNITIES**

Opportunities are provided to perform and exhibit at our annual On Show evenings and frequent formal and informal performances. These events provide an opportunity for students to showcase their talents and achievements in CAPA subjects as solo artists and members of ensembles.



# SPORT - GRADE, PORT HACKING ZONE & RECREATIONAL

**Grade sport** at The Jannali High School takes place on Thursday afternoon. The school competes against schools in the Port Hacking Zone in sports that include beach volleyball, touch football, netball, basketball, soccer, Oztag, and cricket, to name a few.



Our school is very competitive in these competitions and has regularly taken out Zone premierships. In recent years the number of our students entered in these competitions has increased. We now have a culture of enthusiastic participation in a wide range of sports.

Each week on assembly there is a presentation of the 'Sports Star of the Week'. During the assembly the school also recognises and congratulates students on their external sporting achievements.

For those students who do not participate in a grade competition, the school has a selection of enjoyable recreational sports. These include surfing, ten pin bowling, aerobics, canoeing, dancing, beach fitness, tennis, yoga, golf, indoor rock climbing and table tennis.

Leave from sport is granted only in urgent cases. Should a student request leave, then a note from a parent or guardian should be brought to the Front Office before 8:30am on the day of intended sporting absence. The doctor's/dentist's appointment card should be attached where possible. Parents are advised to ensure that these appointments are not made during the sport time unless this is unavoidable.

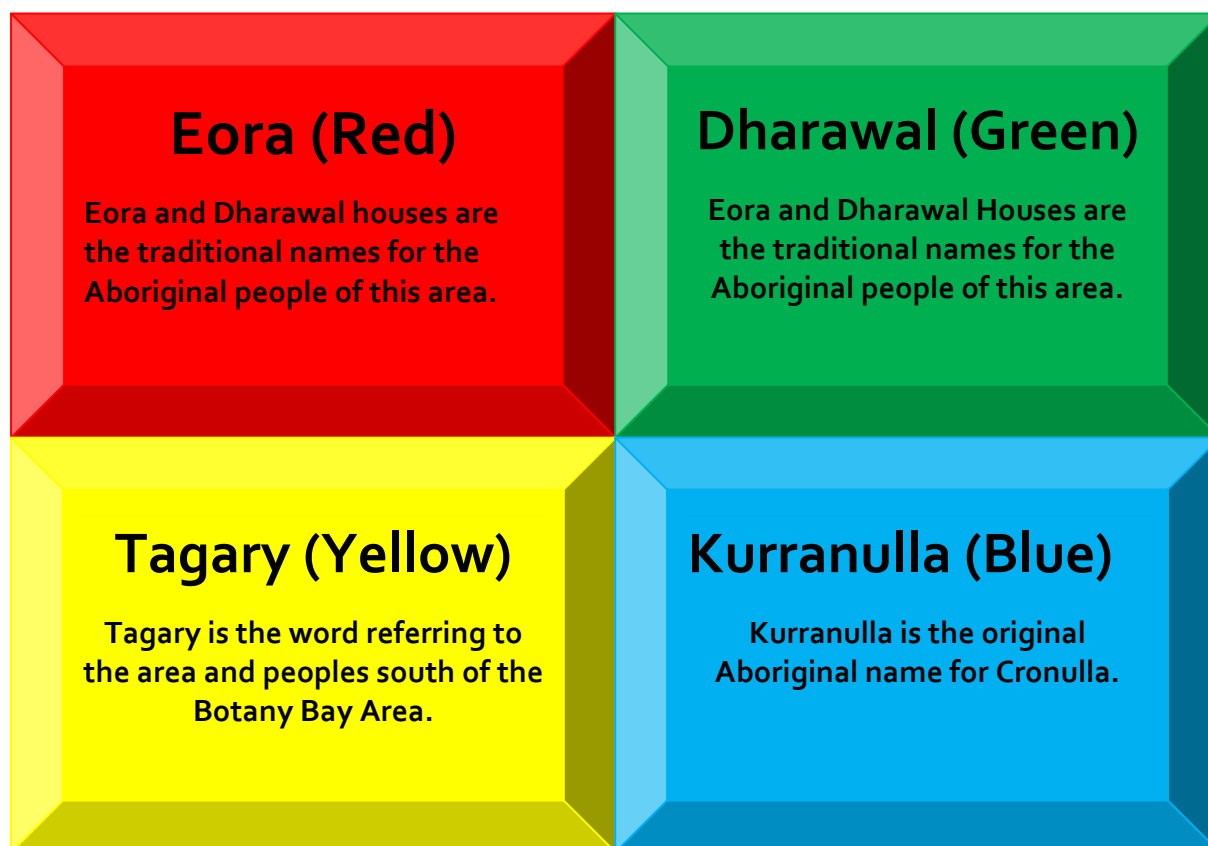
As well as the grade competition, students are invited to participate in junior and senior state-wide knockout competitions. In recent years we have had success in Soccer, Cricket, Netball, Basketball, Futsal and Volleyball. These teams start their games in the Sydney East Region, however, games can be played anywhere in the State.

It is compulsory for all students to participate in our school carnivals. The swimming carnival is held at Sutherland Leisure Centre and the athletics and cross country carnivals are held at Sylvania Athletics Track and / or Waratah Park Sutherland. Successful athletes can represent The Jannali High School at the zone, regional and state level.



# TJHS HOUSES

Our sporting culture is further highlighted through The Jannali High School's sporting houses. Students are placed in the following sporting houses based on their surnames. The house with the most points at the end of the year is awarded The Jannali Cup.



Sport is an integral part of every student's learning experience at The Jannali High School. We recognise that it is beneficial to students' confidence, physical development and friendship building. The support of parents in encouraging their children to be actively involved in sport helps us develop students' skills and interests, as well as maintaining an active and healthy lifestyle.



# SCHOOL UNIFORM

The Jannali High School's uniform policy reflects the high expectations we have of our students. The uniform emphasises our school identity, and as such we expect our students to wear their uniform with pride. Consequently, the school, in conjunction with the P & C, endorses the correct wearing of our uniform at all times.

Pleated check day skirt

White (junior) or sky blue (senior) button through over blouse with embroidered logo

Navy gabardine tailored trousers

Navy gabardine tailored shorts

White socks above the ankle. No logos or motifs

Black or blue stockings (winter). No logos or motifs

Black lace-up, fully enclosed leather/suede shoes

Navy v-neck jumper with school logo

Navy microfibre jacket with school logo

Navy scarf (winter only)

Cap



Girls All Seasons Uniform

White (junior) or sky blue (senior) button through shirt with embroidered pocket

Navy melange zip fly dress short

Navy melange zip fly tailored trouser

Navy v-neck jumper with school logo

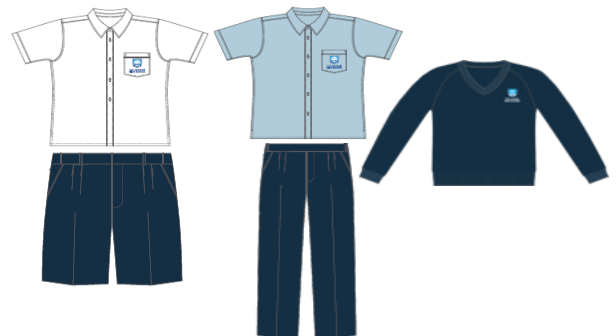
Navy microfibre jacket with school logo

White socks above the ankle. No logos or motifs

Black lace-up fully enclosed leather/suede shoes

Navy scarf (winter only)

Cap



Boys All Seasons uniform

## Sports / PE Uniform – Thursdays and during PE Lessons

Light blue collared mesh polo shirt with school logo

Navy microfibre shorts with school logo

Navy microfibre track pants with school logo

White socks, above the ankle. No logos, no motifs

Leather sports shoes or joggers (no canvas shoes)

Navy microfibre or soft shell jacket with school logo

Navy v-neck jumper

Cap



Unisex sports uniform

To purchase any school uniform items, parents or students can access the Uniform shop, by:

- Visiting the uniform shop **each Monday and Wednesday between 8:00am – 2:30pm**
- Order online for pick-up in store or home delivery
- Or scan the QR code





# BELL TIMES

Monday, Tuesday, Wednesday, Friday	Times	
Zero	7:30 am	8:30 am
Roll Call - Reading/ Assembly	8:40 am	8:56 am
1	8:56 am	9:56 am
2	9:56 am	10:56 am
Recess	10:56 am	11:18 am
3	11:18 am	12:18 pm
4	12:18 pm	1:18 pm
Lunch 1	1:18 pm	1:39 pm
Lunch 2	1:39 pm	2:00 pm
5	2:00 pm	3:00 pm

Thursday	Times	
Zero	7:30 am	8:30 am
Roll Call	8:40 am	8:50 am
1	8:50 am	9:50 am
2	9:50 am	10:50 am
Recess	10:50 am	11:10 am
3	11:10 am	12:10 pm
Lunch 1	12:10 pm	12:30 pm
Lunch 2	12:30 pm	12:50 pm
Sport	12:50 pm	2:45 pm

